



Extractors
RADHEX
IMPLANTS

IMPLANT AND SCREW EXTRACTORS

SPECIFIC USES OF TYPES OF EXTRACTORS

Do you want to approach retreatment in implantology in a predictable way?

The **Radhex Implants®** implant extractor facilitates trauma-free removal of implants in a short time, achieving high predictability with more than 90% success.

The EXT IMP guarantees the extraction of implants with both internal and external connections, maximally preserving the implant bone bed for immediate insertions.

Additionally, the EXT IMP implant extraction kit is versatile and universally applicable in dental implant systems. Improve the success rate of retreatments with the EXT IMP implant extraction kit from Radhex Implants.



TYPE 1 EXTRACTOR EXT IMP 01

Designed to remove implants (explantation).
12° taper.
Ø Tip: 1.20 mm.
For metric internal thread: M1.6/M1.8/M2.0.
Universal for most implants on the market.
Should not exceed a torque greater than 100 N·cm.
For higher torques, type 2 extractor should be used.



TYPE 2 EXTRACTOR EXT IMP 02

Designed to remove implants (explantation).
10° taper.
Ø Tip: 1.50 mm.
For metric internal thread: M1.8/M2.0.
Universal for most implants on the market.
Should not exceed a torque greater than 200 N·cm.
It can be used for M 1.6 implants if a type 1 or type 3 extractor has previously been used.



EXTRACTOR TYPE 3, (Fine), EXT IMP 03

Designed to remove implants (explantation).
15° taper.
Ø Tip: 1.00 mm.
For metric internal thread: M1.4/M1.6/1.8/M2.0.
Universal for most implants on the market.
Should not exceed a torque greater than 100 N·cm.
For higher torques, type 2 extractor should be used.



EXTRACTOR TYPE 4, (Fine), EXT IMP 04

Designed to remove implants (explantation).
Conicity 13.5°.
Ø Tip: 1.00 mm.
For metric internal thread: M1.4/M1.6/1.8/M2.0.
Universal for most implants on the market.
Should not exceed a torque greater than 100 N·cm.
For higher torques, type 2 extractor should be used.

RADHEX APPLICATIONS

TYPE 1 EXTRACTOR

Applicable to ES / EM / IS / IM Platforms.

TYPE 2 EXTRACTOR

Applicable to EM / IS / IM Platforms.
Also for CL except long. 6.0mm.

TYPE 3 EXTRACTOR

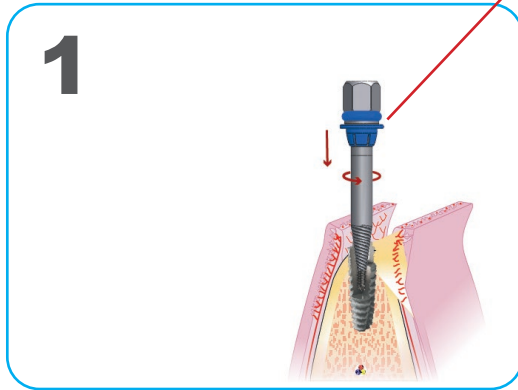
Applicable to Platforms ES / EM / IS / IM / CS / CM.
Also for CL except long. 6.0mm.

TYPE 4 EXTRACTOR

Applicable to Platforms ES / EM / IS / IM / CS / CM.
Also for CL except long. 6.0mm.

INSTRUCTIONS FOR USE

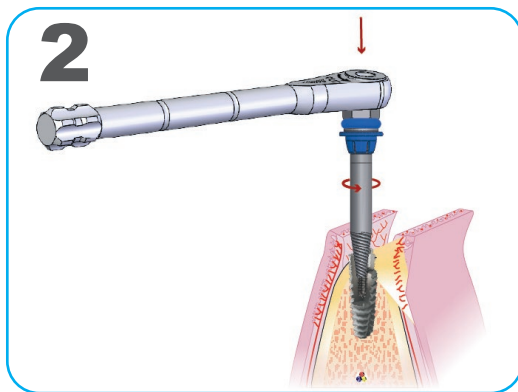
QUICK IDENTIFICATION OF EXTRACTOR TYPE, (Rubber Color)



STEP 1

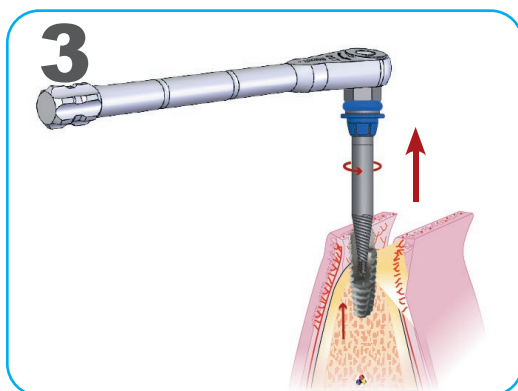
Check the implant integration area. If there is thick cortex, it is advisable to release it perimeter with a fissure bur.
Next, select the explantation device based on the metric and state of deterioration of the implant to be extracted.
Insert the Explantation Device manually; it is recommended to use the MNG 001 wrench with a firm and centered counterclockwise torque until a correct adjustment is obtained. This will allow for firmness, straightness and alignment with the implant, a correct position that allows explantation.

“First milling the cortex and then using the extractor to remove the implant significantly reduces the integration forces between the implant and the bone, facilitating the disinsertion and explantation process.”



STEP 2

Attach the ratchet to the extractor and thread left-hand counterclockwise, applying pressure on the ratchet.
The process must be carried out firmly, always keeping the head centered of the ratchet on the axis of rotation, this is essential because it ensures that the effort is purely rotational, avoiding the leverage that can cause fracture of the extractor.



STEP 3

The application of effort must be intermittent, firm and increasing intensity, until the release of the implant is perceived, yielding to the rotation.
Once freed from osseointegration, it will unscrew smoothly and progressively.



Implant and screw extractors
They can also be used with the key manual MNG 001.

RESCUE: from Deformed Micro-screws

SPECIFIC USES OF TYPES OF EXTRACTORS

Do you want to approach retreatment in implantology in a predictable way?
The **Radhex Implants®** implant extractor facilitates trauma-free removal of the implants in a reduced time, achieving high predictability with more than 90% success.

The EXT IMP guarantees the extraction of implants with both internal and external connections, maximally preserving the implant bone bed for immediate insertions.

Additionally, the EXT IMP implant extraction kit is versatile and universally applicable in dental implant systems. Improve the success rate of retreatments with the EXT IMP implant extraction kit from **Radhex Implants®**.



TYPE 1 DEFORMED SCREW EXTRACTOR EXT TOR D01

Designed to extract screws with crowned or deformed connections.
20° taper
Ø Tip: 1.20 mm.
Universal for Hexagonals of 1.20, 1.25, 1.27, 1.30, Uni Grip, Torx, etc.
Also applicable for screws, healing abutments, screwable abutments, etc.



TYPE 2 DEFORMED SCREW EXTRACTOR EXT TOR D02

Designed to extract screws with completely damaged connections.
22° taper
Ø Tip: 1.35 mm.
It is used when the type 5 extractor does not hold or drag the affected area.

EXTRACTOR KIT

Sterilizable metal support cup.

2 deformed microscrew extraction tips.

4 explantation tips for implant extraction.

Manual handle for screwing Hexagonal socket.

Long and Short Hexagonal insert manual extension.

Option: Hexagonal socket ratchet wrench.



REF: MNG001
Manual Handle



REF: PRM 001
Extender
Short Manual

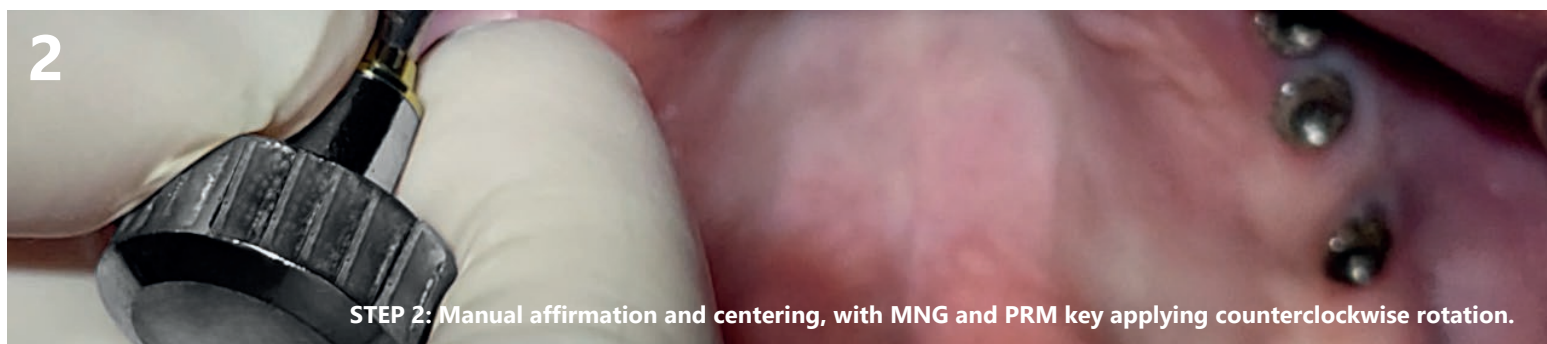
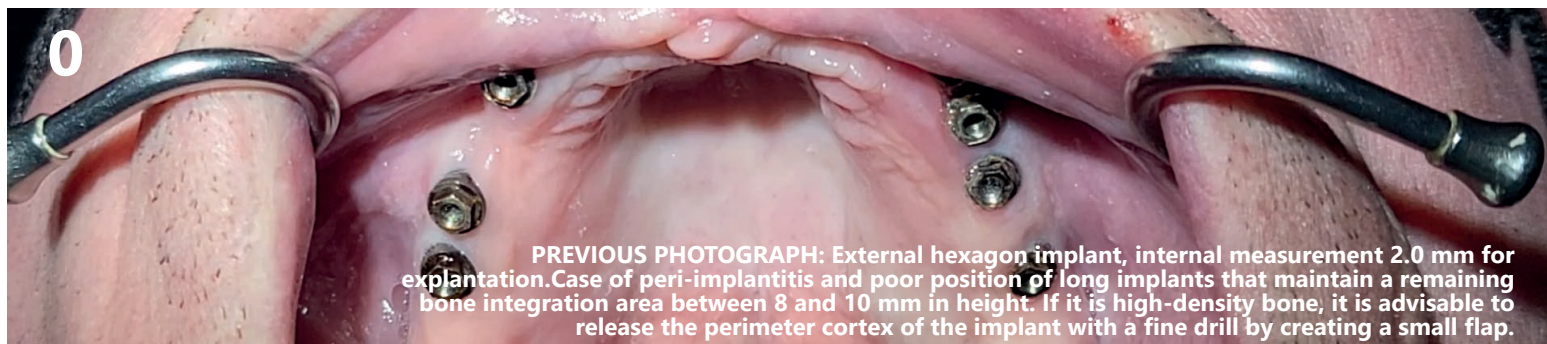


REF: PRM 002
Extender
Long Manual



REF: CRR 001
Ratchet

IMPLANT EXPLANATION SEQUENCE



4

STEP 4: Firm counterclockwise movement, maintaining the center with digital pressure, with no leverage to avoid device fracture. The tension must be applied in a progressively controlled and focused manner.

5

STEP 5: After reaching maximum tension, the detachment will be clearly perceived as a small jump in rotation is suddenly caused. From that moment on, you can freely rotate the ratchet counterclockwise, visualizing how the implant emerges.

6

STEP 6: Finish the explantation process with the MNG manual wrench.

7

AFTER PHOTOGRAPH.

RESCUE: from Fractured Micro-screws

SPECIFIC USES OF TYPES OF EXTRACTORS



REF.	INTERNAL METRIC	CORRESPONDENCE
EXT TOR F ES	M1.6 Fractured Screw Extractor	PHE350 connection - T. Branemark 3.5
EXT TOR F EM	M2.0 Fractured Screw Extractor	PHE350 connection - T. Branemark 4.1
EXT TOR F IS	M1.8 Fractured Screw Extractor	PHI350 connection - T. Zimmer 3.5
EXT TOR F IM	M1.8 Fractured Screw Extractor	PHI450 connection - T. Zimmer 4.5
EXT TOR F CS	M1.4 Fractured Screw Extractor	PCI230 connection - T. Astra Yellow
EXT TOR F CM	M1.6 Fractured Screw Extractor	PCI280 connection - T. Astra Aqua
EXT TOR F CL	M2.0 Fractured Screw Extractor	PCI350 Connection - T. Astra Lilac

INSTRUCTIONS FOR USE

The fractured screw rescue device is made up of a reverse grip reamer made of high-hardness steel, which has a centering device that fits into the implant platform.

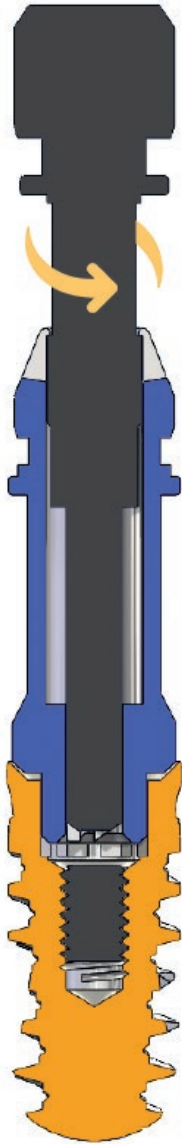
This device must be connected centered and linear to the axis of the dental implant that has a fractured screw, and held firmly in that position.

Counterclockwise rotation should be applied while maintaining slight pressure on the fractured screw portion; this operation should be performed at low revolutions. (R.P.M).

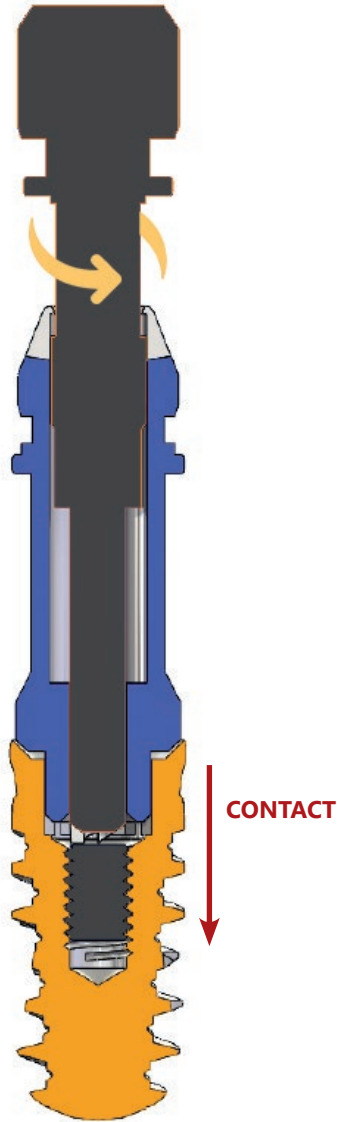
The active tips of the device will engage the fractured screw fragment, enabling its optimal extraction. Once the complete expulsion of the fragment has been verified, you have enabled the implant for normal use.

These devices are for single use due to the great mechanical stress exerted by their small attack tips.

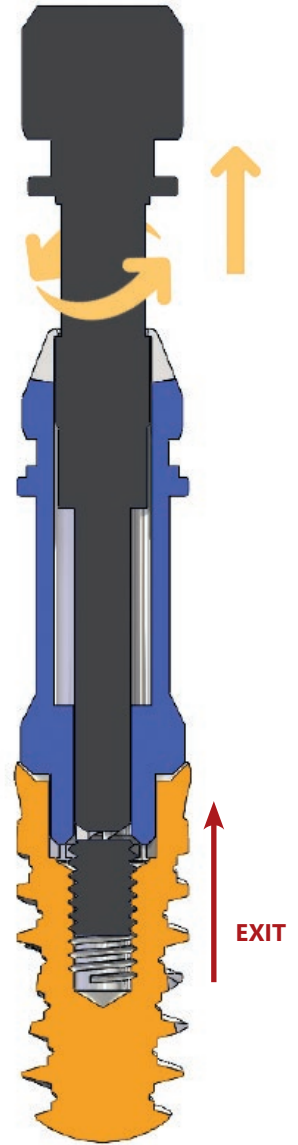
POSITIONING



**CONTACT AND TURN
ANTI-SCHEDULE**



**EXTRACTION
PROGRESSIVE**



A commitment to patient satisfaction

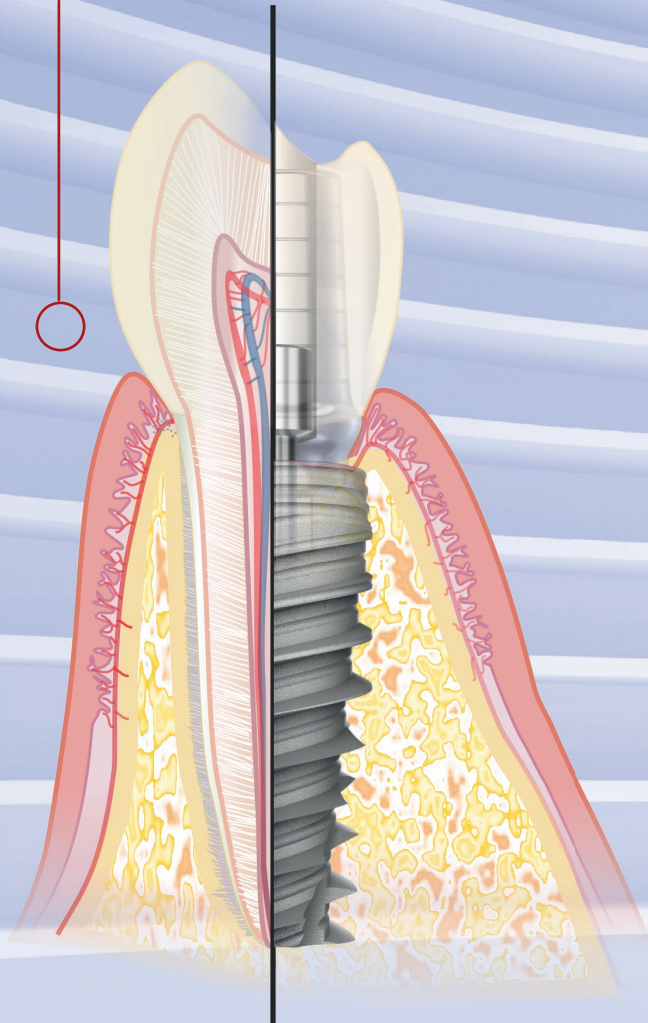
Our goal is to focus all our knowledge and experience on supporting professionals so that they can treat as many patients as possible and in the best possible way.

To do this, we focus on four fundamental pillars.

Una Elevada Calidad y Diseño en nuestros productos
-High Quality and Design in our products-

Quality is our commitment, and design is our spirit.

With an always innovative attitude, we create effective, innovative products and solutions, and improve existing ones, so that professionals can provide their patients with fully functional, safe and natural-looking results.



Ser un Partner Técnico - Comercial de Confianza
-An excellent Commercial Technical Partner-

A constant presence in training, to bring the professional the most advanced knowledge and experiences, joins a serious, dynamic and trustworthy commercial team that always proves to be the best support for the performance of the professional's work.



Tranquilidad para el Profesional
-Peace of mind for the Professional-

A constant investment in research and development guarantees the professional the appropriate framework to perform their work safely. We add to this the quality of our products and our constant support in training and technique, thereby ensuring the path to professional success.



Satisfacción para el Paciente
-Patient Satisfaction-

It is the highest goal to which we wish to contribute, and for which we commit all our efforts. A product made for oral health, with a lot of effort, and with the great satisfaction and peace of mind that is felt when things are done correctly.

Premium Extractors



© RADHEX_IMPLANTS/RADHEX-IMPLANTS



comercial@radhex.es
900 350 450
www.radhex.es