

PCI+ Lines

 **RADHEX**
IMPLANTS



PCI+ PLUS Lines

CONNECTIVITY:

CS+ = PCI250 = Plat. Internal Conical Ø2.50 mm / Nobel Active 3.0 Type

CM+ = PCI300 = Plat. Internal Conical Ø3.00 mm / Nobel Active NP Type

CL+ = PCI340 = Plat. Internal Conical Ø3.40 mm / Nobel Active RP Type

We are proud to present to professionals the **PCI+ Plus** Lines, whose macrogeometry is based on a design that combines security and aggressiveness. With a high self-tapping profile, these lines allow a smooth, safe and firm insertion maneuver, ensuring high primary stability and rapid progression thanks to their high metric feed pitch.

This line has been designed with conical connection platforms, which not only offer high mechanical safety, but also absolute biological sealing of the GAP, achieving a “cold welding” effect. This approach becomes a maximum guarantee for the protection of the most critical area and the prevention of peri-implantitis. The conical platforms are compatible with some of the most widespread platforms worldwide, such as the Nobel Active system.

The transgingival section of these implants features an Anodized Intramucosal Ring with micro striations, ensuring maximum connection with the surrounding soft tissues for optimal implant protection.

PCI+ Plus is presented as a range of multipurpose implants that cover three platform diameter versions:

PCI 250: FIT connection, designed for diameters of 3.00 mm and 3.50 mm.

PCI 300: Highly versatile, suitable for diameters of 3.50 mm, 3.75 mm, 4.00 mm and 4.50 mm.

PCI 340: Intended for large diameter implants, with options of 4.00 mm, 4.50 mm, 5.00 mm and 6.00 mm.

At **Radhex®**, we extend a cordial invitation to experience maximum security and enjoy the extremely high efficiency provided by the **PCI+ Plus** design in the field of dental implantology.

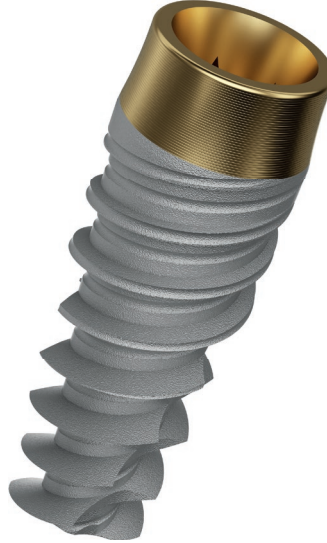
PCI+PLUS Implants



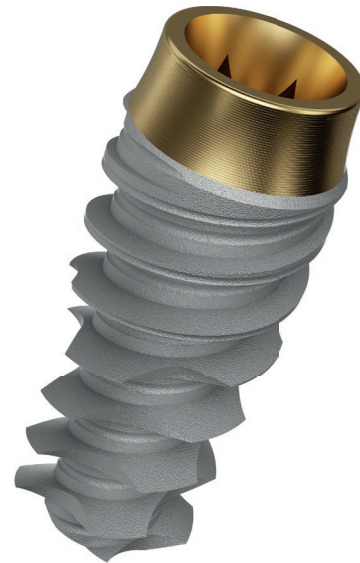
PCI 250 Type



PCI 300 Type



PCI 340 Type



- PCI+ Plus Internal Conical Connection.
- Bone-link subtractive surface treatment.
- Implants, with Anodized Mechanized Intramucosal Ring, Intraosseous or Transgingival, with Micro striae.
- Availability of Platform switching, in all references and Body diameters.
- Double Helix threads, with progressive profile, conical central core and cylindrical-conical crest profile.
- Helical design self-threading apical fronts.
- Generically indicated for all types of Bones.
- Especially indicated for low bone density, (especially for type III and type IV).
- Milling speed: 500 to 800 rpm.
- Insertion speed: 25 rpm.
- Container with double protection vial.
- Maximum protection and easy handling.
- Includes closing cap.

Excellence in quality and design constitute the essence of Radhex®, the DNA of a dental implant manufacturing company, which is characterized by offering users the practicality derived from optimal ergonomics and designs based on the most advanced technological principles for conception. of dental implants.

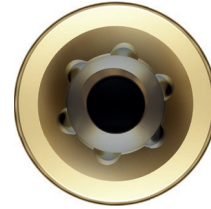
PCI 250 Type

General Length and Diameter Measurements

Ø: 2.50 mm
Connection Diameter

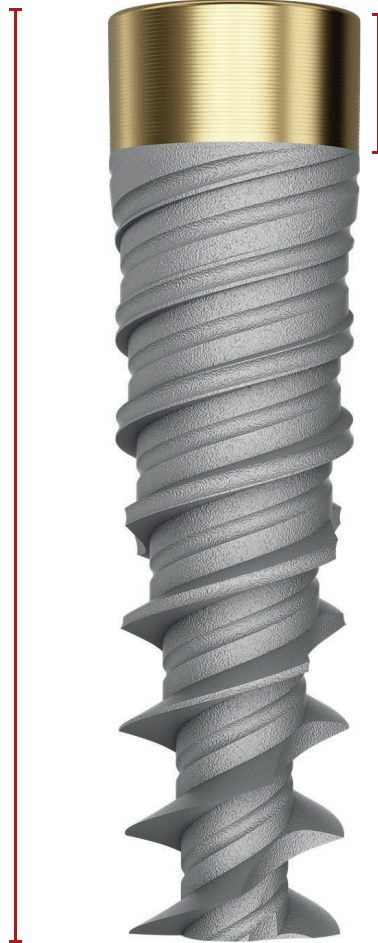


Hexalobular Geometry
Interior Connection



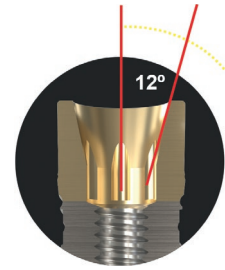
L: 2.10 mm

L
Body Length



L: 2.00 mm

Section
Intramucosa
Anodized



12°

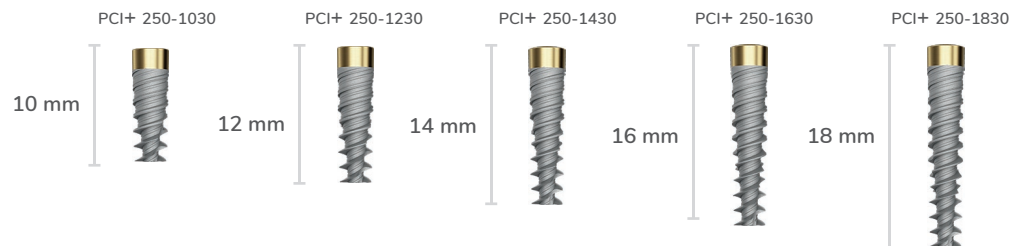
Ø
Body Diameter

PCI250: Implants Internal Conical Platform Plus Ø 2.50.
CS+ Connection Code.

Available Diameters and Lengths

SCALE 1.5:1

Ø 3.00



→ FIT ←

3.0

IMPLANTS

THE NARROW DIAMETER
FOR SHARP CROSSES
IN LOWER ANTERO SECTOR

WITH THE CONICAL RADHEX® CONNECTION,
COMPATIBLE.

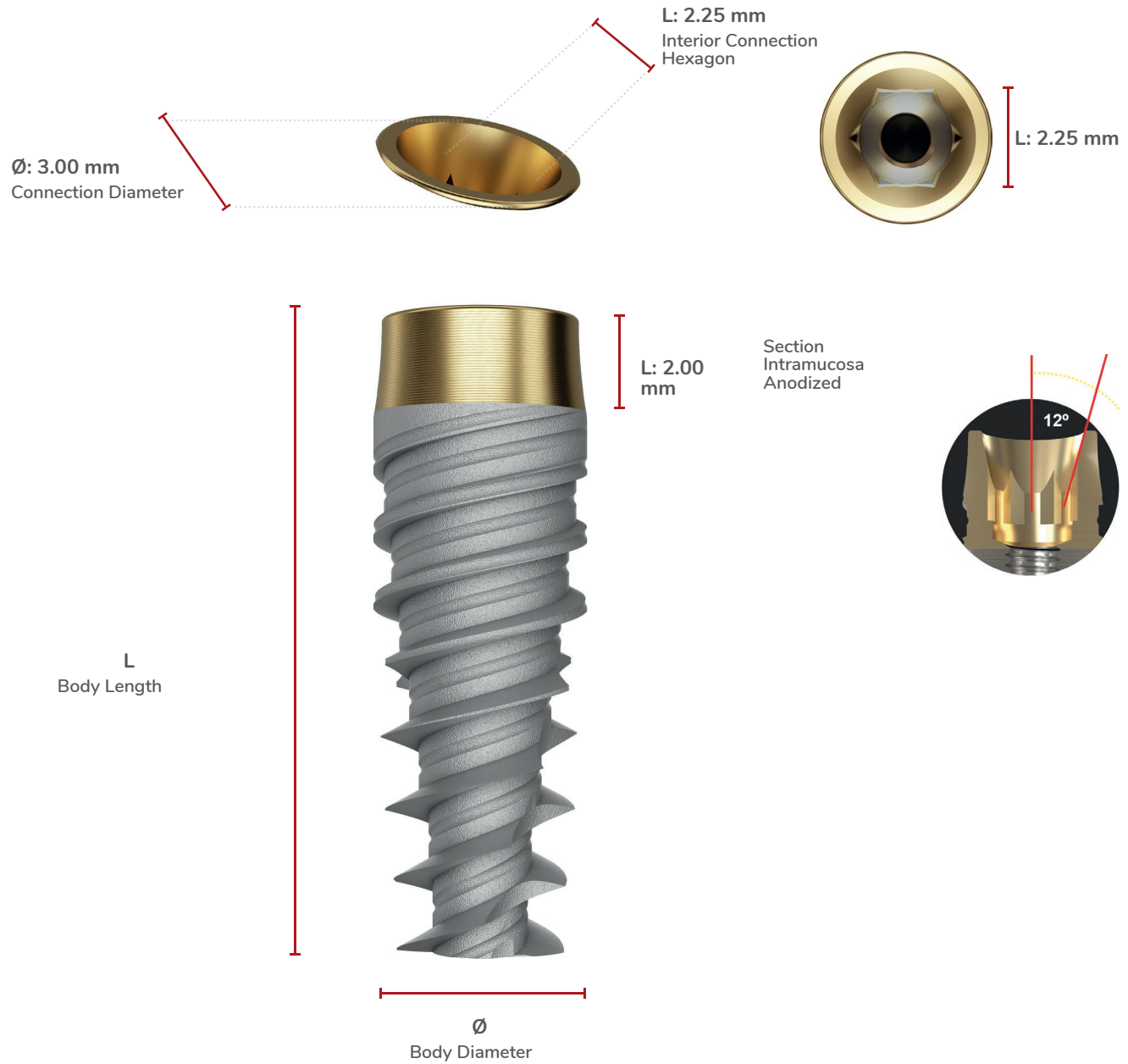


Short Implant

“The Reason for Narrow Ridges”

PCI+ 300 Type

General Length and Diameter Measurements

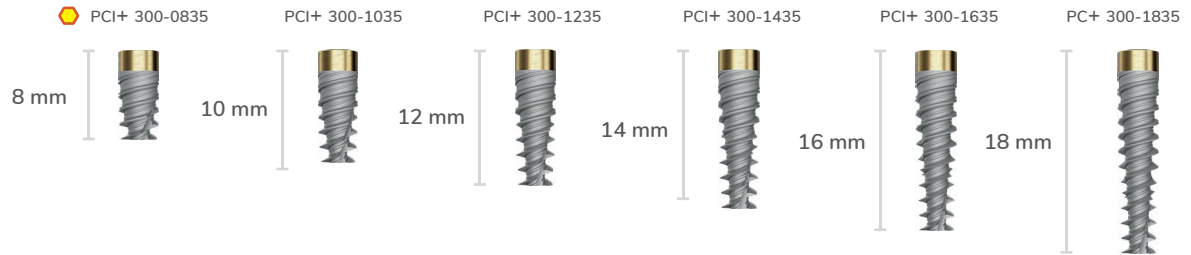


PCI300: Implants Internal Conical Platform Plus Ø 3.00. CM+ Connection Code.

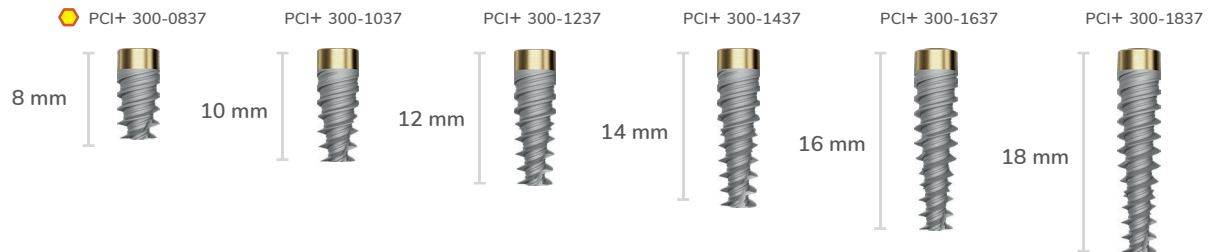
Available Diameters and Lengths

SCALE 1.5:1

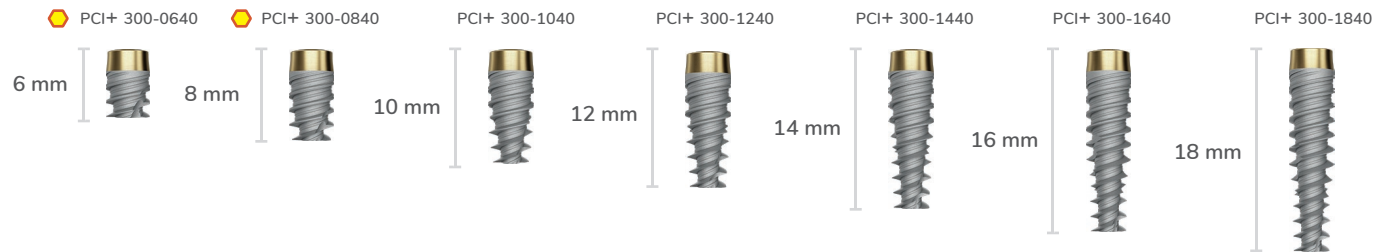
Ø 3.50



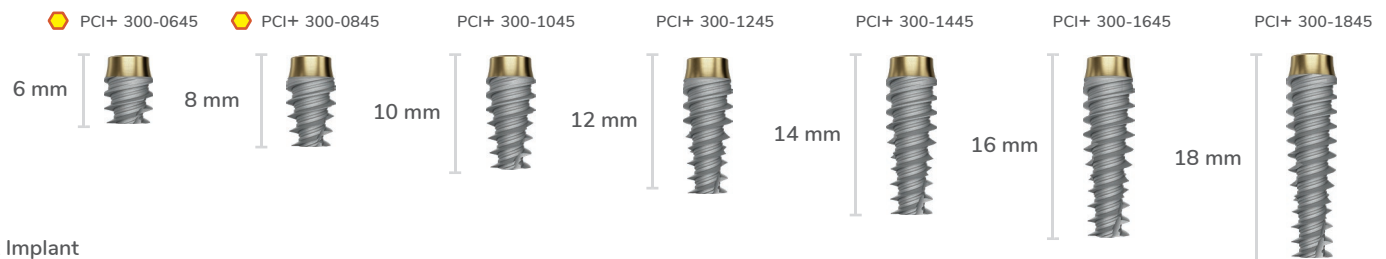
Ø 3.75



Ø 4.00



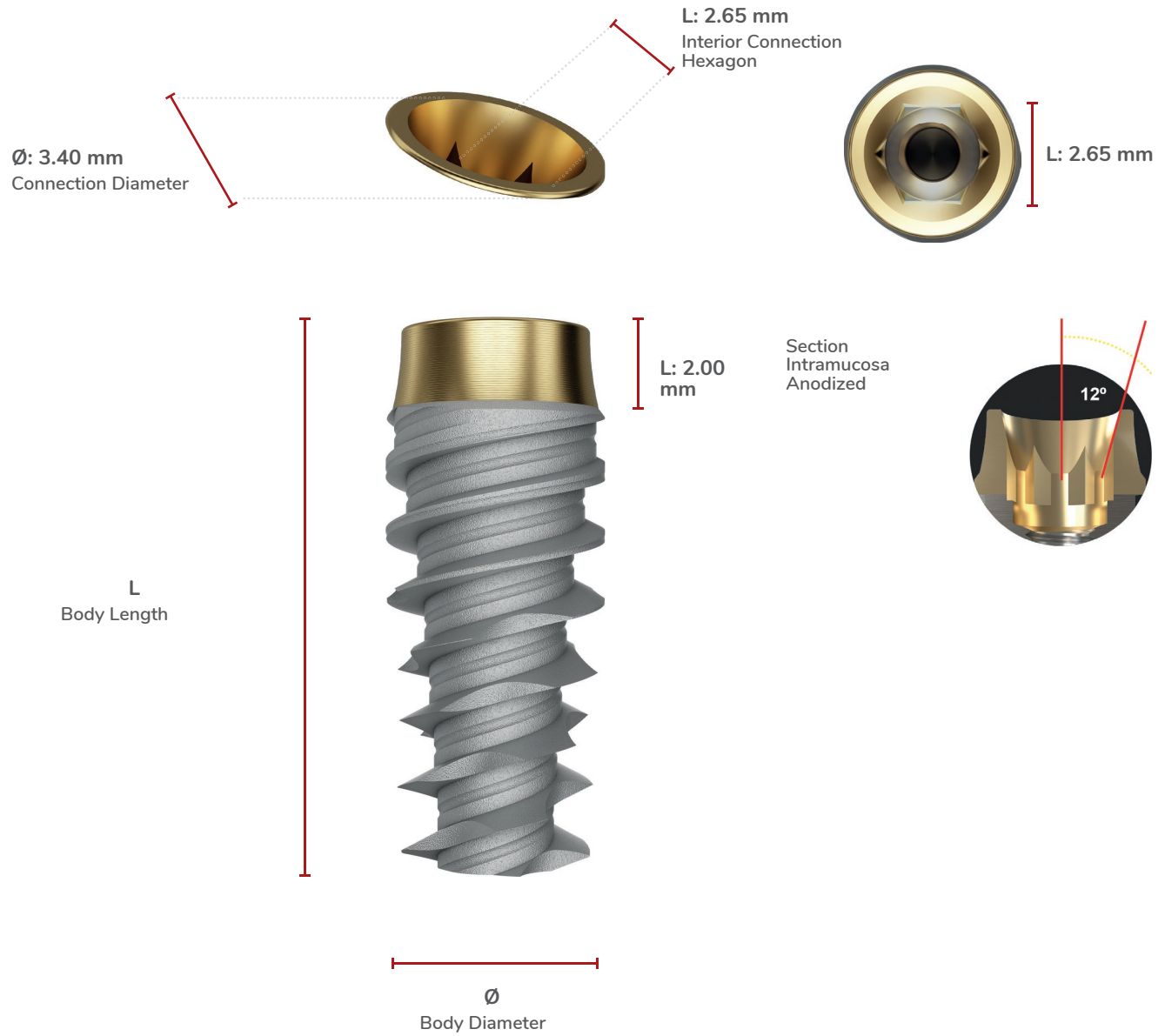
Ø 4.50



Short Implant

PCI 340 Type

General Length and Diameter Measurements

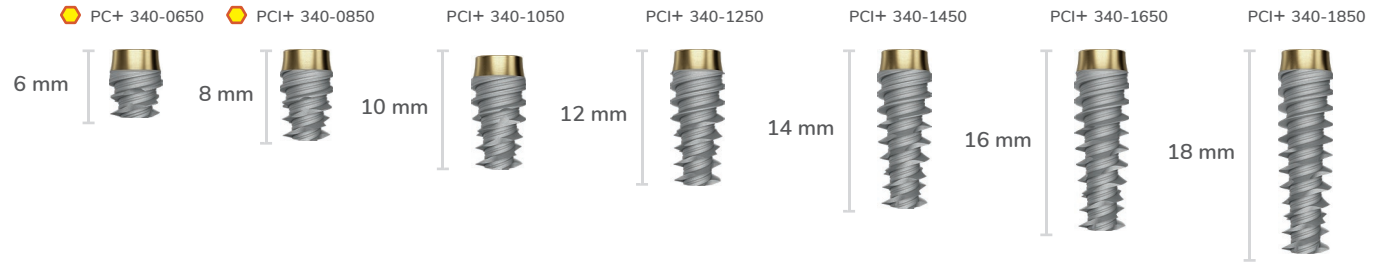


PCI340: Implants Internal Conical Platform Plus Ø 3.40.
CL+ Connection Code.

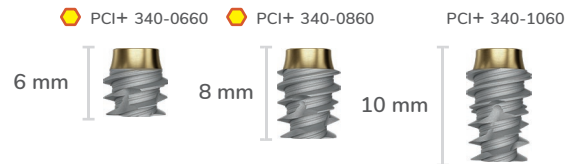
Available Diameters and Lengths

Ø 5.00

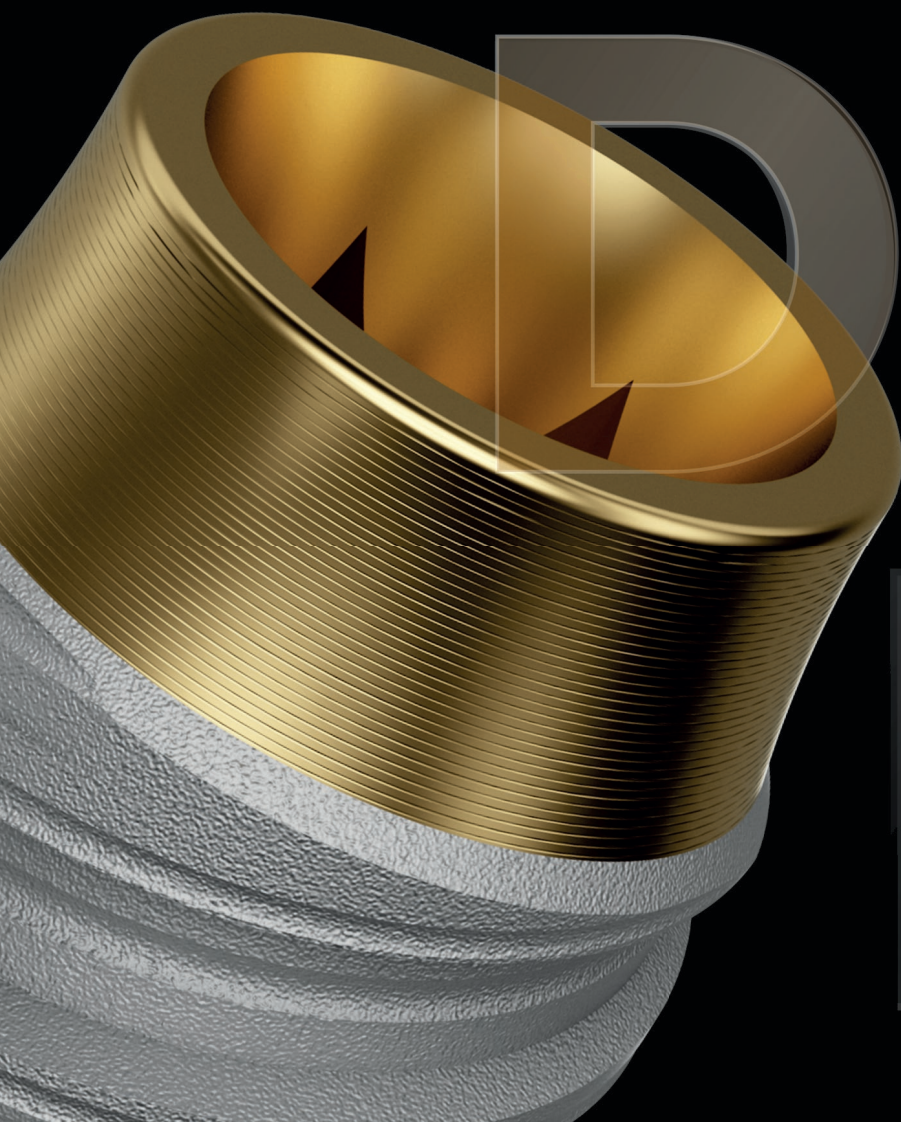
SCALE 1.5:1



Ø 6.00



RAA



DD

HH

EX



Premium PCI +plus



© RADHEX_IMPLANTS/RADHEX-IMPLANTS



comercial@radhex.es
900 350 450
www.radhex.es