

PCI Lines

 **RADHEX**  
IMPLANTS



## PCI Lines

### **CONNECTIVITY:**

**CS = PCI230 = Plat. Internal Cone Ø2.30 mm / Astra Yellow Type**

**CM = PCI280 = Plat. Internal Conical Ø2.80 mm / Astra Aqua Type**

**CL = PCI350 = Plat. Internal Conical Ø3.50 mm / Astra Lilac Type**

A high standard of product quality and design makes up the DNA of the Radhex Implants® manufacturing company, offering the user the practicality provided by optimal ergonomics and designs based on the most advanced technological principles for the conception of a dental implant.

We are proud to present to professionals, the PCI Lines, whose macro-geometry is based on a design, which at the same time offers Safety and Aggressiveness, with its profile of high self-threading, which enables a smooth, safe, and insertion maneuver. firm, with high primary stability and rapid progression due to its high metric advance step.

Line designed with Conical connection platforms, which offer high mechanical safety and at the same time an absolute biological sealing of the GAP, with the “cold welding” effect, a maximum guarantee for the protection of the most critical area, and for prevention of the peri-implantitis.

PCI are multipurpose implants, which come in three platform diameter versions:

**PCI 230:** The FIT connection, for implants with diameters of 3.00 mm.

**PCI 280:** High versatility of use, for 3.50mm diameter implants; 3.75mm; 4.00mm and 4.50mm.

**PCI 350:** Large diameter implants, 5.00mm and 6.00mm.

At Radhex Implants® we invite you to fly with the highest security, and enjoy the extremely high efficiency of the PCI design.

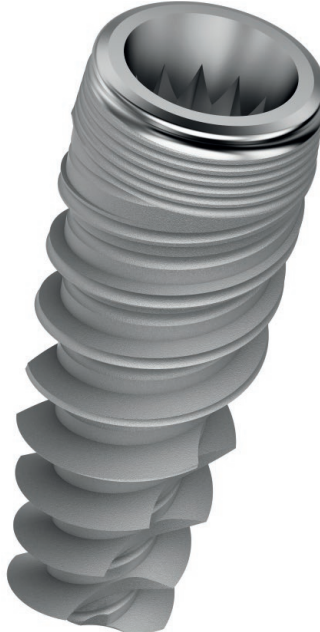
# PCI Implants



## PCI 230 Type



## PCI 280 Type



## PCI 350 Type



- PCI Internal Conical Connection.
- Bone-link subtractive surface treatment.
- Cervical ring, with 0.4 mm machined surface finish.
- Availability of Platform switching, in all references and Body diameters.
- Double Helix threads, with progressive profile, conical central core and cylindrical-conical crest profile.
- Helical design self-threading apical fronts.
- Generically indicated for all types of Bones.
- Especially indicated for low bone density, (especially for type III and type IV).
- Milling speed: 500 to 800 rpm.
- Insertion speed: 25 rpm.
- Container with double protection vial.
- Maximum protection and easy handling.
- Includes closing cap.



Mucho más que una marca,... un Concepto.

Much more than a brand, ... a Concept.

Suavidad, Estabilidad, y Precisión en la Conducción.

Softness, Stability, and Precision in driving.



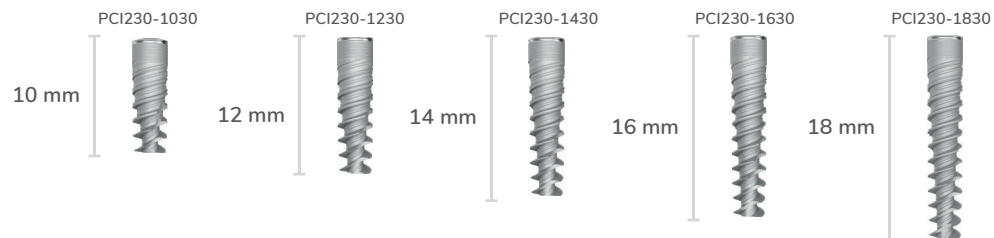
Intercontinental Flight Displacement- Image

PCI230: Internal Conical Platform Implants Ø 2.30.  
CS Connection Code.

Available Diameters and Lengths

Ø 3.00

SCALE 1.5:1



→ FIT ←  
3.0  
IMPLANTS

THE NARROW DIAMETER FOR SHARP CRESTS

IN ANTERO-LOWER SECTOR

WITH THE CONICAL CONNECTION OF RADHEX IMPLANTS®.





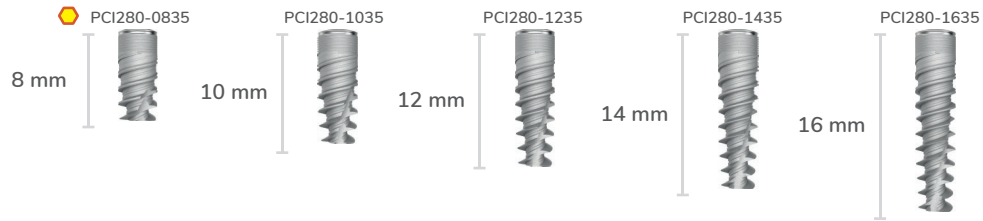
Thoughtful components,...  
for Perfect Smiles

PCI280: Internal Conical Platform Implants Ø 2.80.  
CM Connection Code.

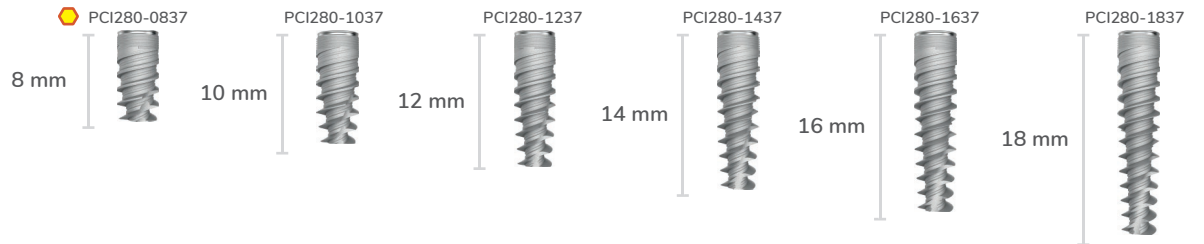
Available Diameters and Lengths

SCALE 1.5:1

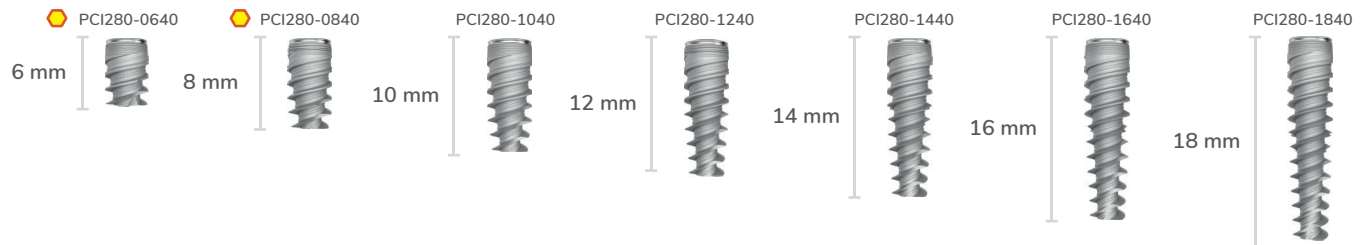
Ø 3.50



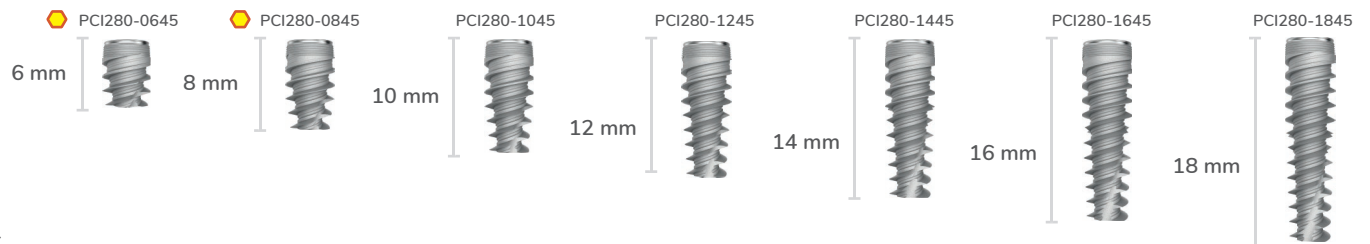
Ø 3.75



Ø 4.00



Ø 4.50



Short Implant





The PCI implant has been meticulously designed for insertion in the Crestal immersion position, which provides an ideal anatomical substrate for stabilization of the Crestal bone around the dental implant. Thanks to its shift platform, it is possible to create a space conducive to low diameter transgingival emergence. This approach ensures minimal invasion of soft tissues, while maintaining maximum respect for their underlying structures.

Careful consideration of these aspects ensures preservation of the health of the surrounding soft tissue, thus contributing to excellent long-term predictability. This design has been conceived to meet the highest demands in terms of tissue health and dental aesthetics. In summary, the PCI implant stands out for its ability to deliver predictable and aesthetically pleasing results, while minimizing soft tissue invasion and promoting long-term health.

In the x-ray image above, the discrete bone occupation volume of the implant can be visualized due to its design, and the fine prosthetic emergence at the level of the gingival tissues, finding the supporting bone tissue, even closing the perimeter of prosthetic emergence supported on the platform jump area.

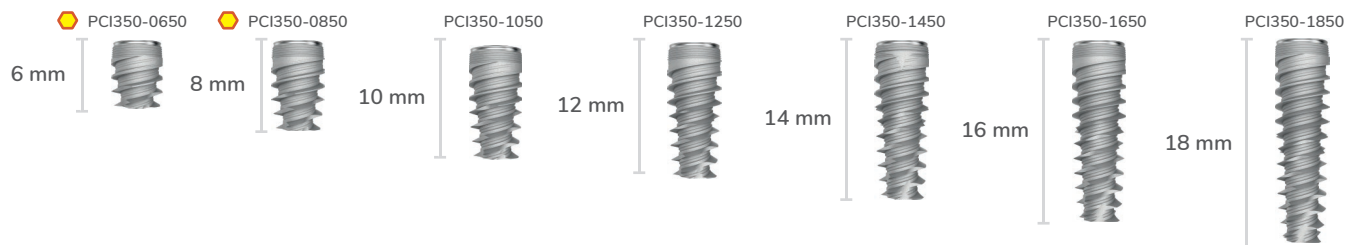


PCI350: Internal Conical Platform Implants  $\varnothing$  3.50.  
CL Connection Code.

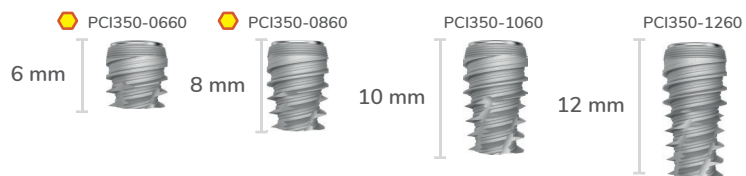
SCALE 1.5:1

Available Diameters and Lengths

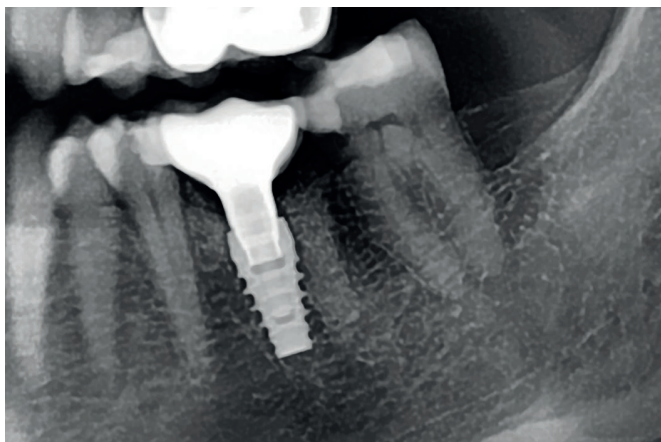
$\varnothing$  5.00



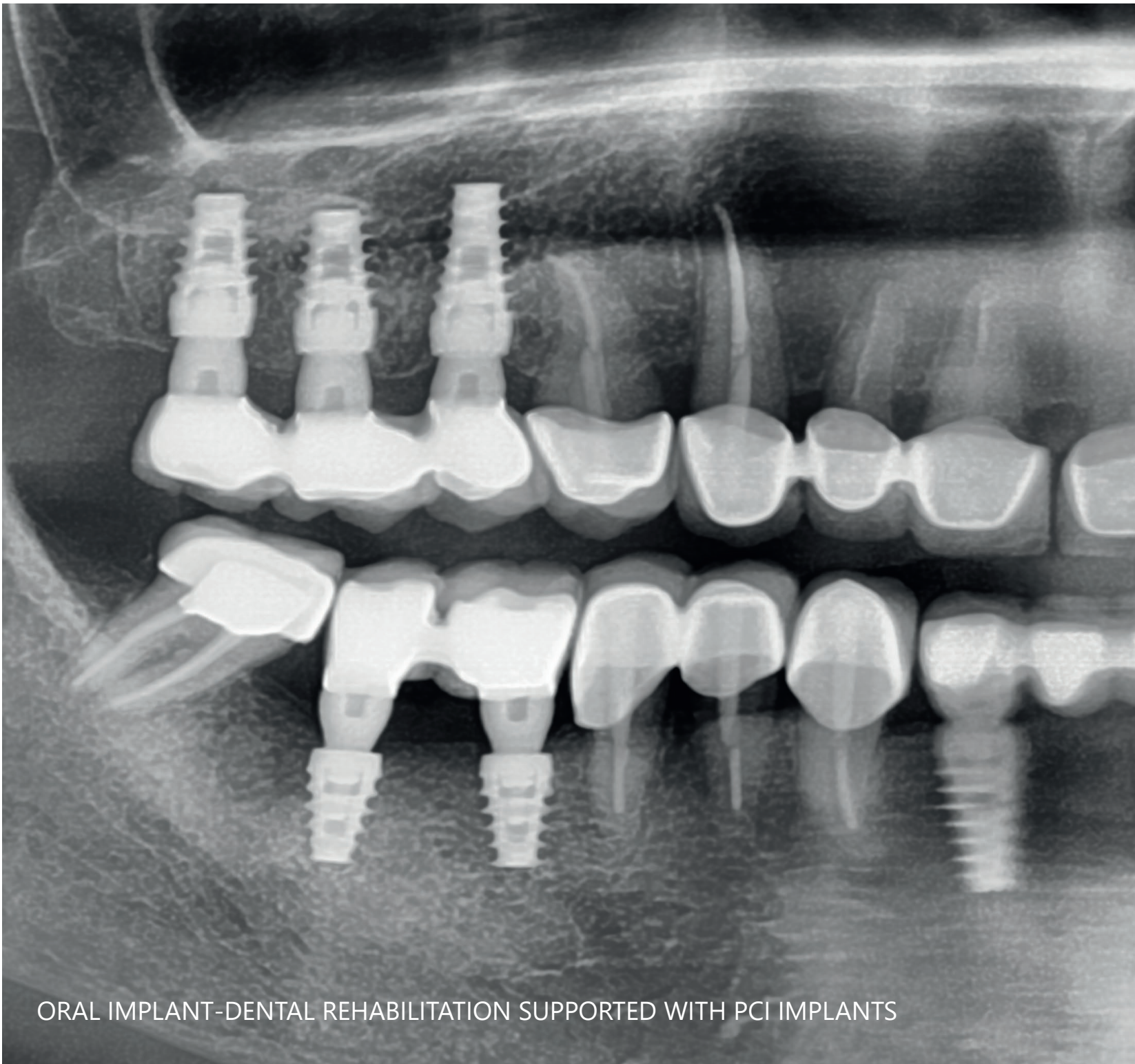
$\varnothing$  6.00



Short Implant

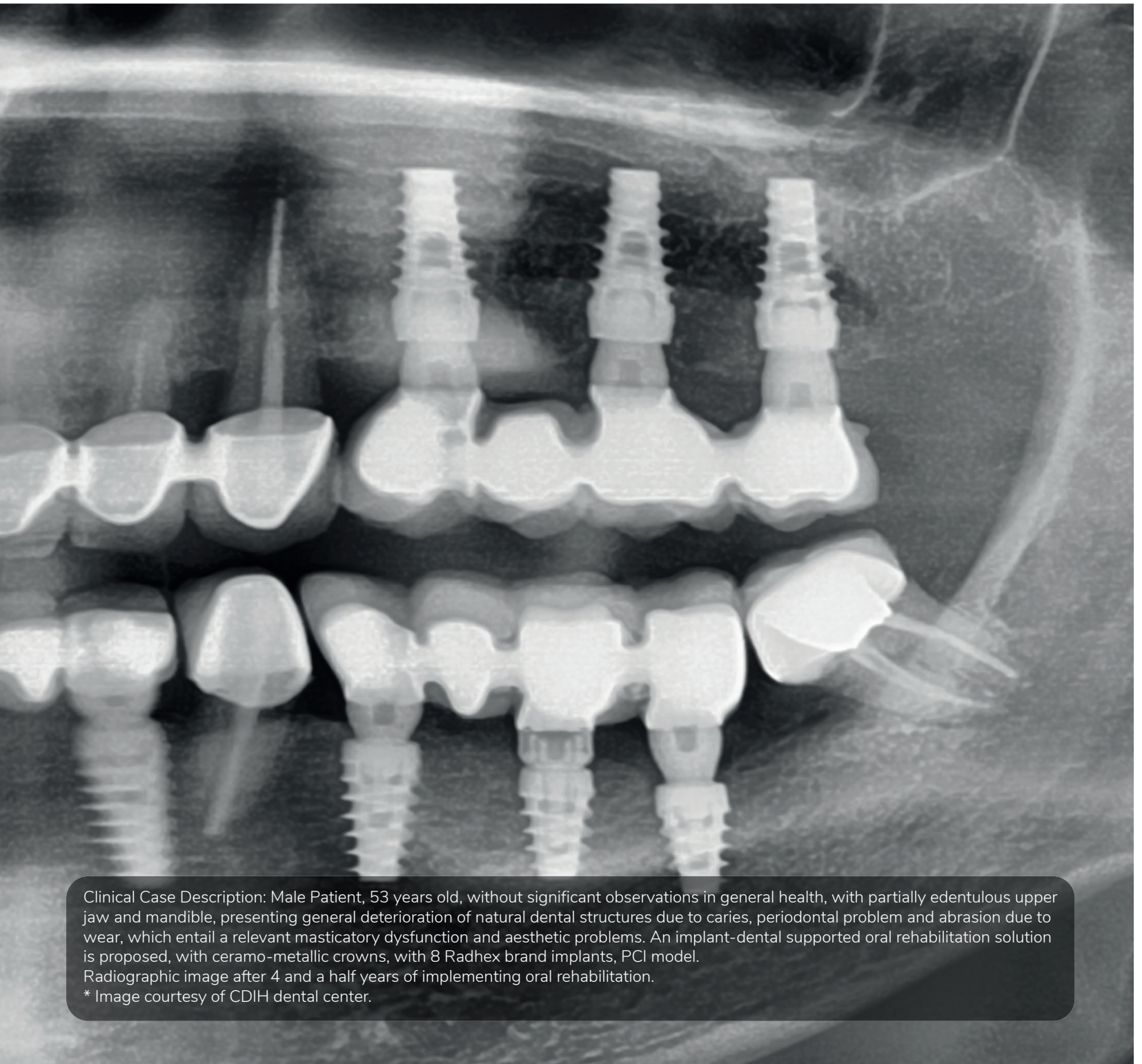


“The Reason for Wide Crests”



ORAL IMPLANT-DENTAL REHABILITATION SUPPORTED WITH PCI IMPLANTS





Clinical Case Description: Male Patient, 53 years old, without significant observations in general health, with partially edentulous upper jaw and mandible, presenting general deterioration of natural dental structures due to caries, periodontal problem and abrasion due to wear, which entail a relevant masticatory dysfunction and aesthetic problems. An implant-dental supported oral rehabilitation solution is proposed, with ceramo-metallic crowns, with 8 Radhex brand implants, PCI model.

Radiographic image after 4 and a half years of implementing oral rehabilitation.

\* Image courtesy of CDIH dental center.

Quality  
PCI



© RADHEX\_IMPLANTS/RADHEX-IMPLANTS



[comercial@radhex.es](mailto:comercial@radhex.es)

900 350 450

[www.radhex.es](http://www.radhex.es)