

PHI Lines

 **RADHEX**
IMPLANTS



PHI Lines

CONNECTIVITY:

IS = PHI350 = Plat. Hex. Internal Ø3.50 mm / Type Zimmer Tapered Screw Vent 3.5

IM = PHI450 = Plat. Hex. Internal Ø4.50 mm / Type Zimmer Tapered Screw Vent 4.5

At Radhex Implants® we think that a high standard of quality and design in the product, together with the practicality provided by an adequate design ergonomics, and the accessibility provided by the economy, are our main bastions of support for the professional in the search of excellence.

It is within this spirit that each element of the design of our products moves, and especially our PHI line.

An implant designed for the professional who prefers internal inserts, with the efficiency and security that can be provided by the American platform originally designed by Dr. Gerald Niznick, surely the most widespread worldwide as an internal hexagonal connection, which at the same time creates a secure conical seat connection closure, which ensures maximum GAP reduction in the implant - attachment interconnection

A versatile implant, always with the PHI Compatible line platform in its two diameter versions:

PHI 350: The most widespread connection, for implants with diameters from 3.50 mm to 4.00 mm.

PHI 450: High stability of prosthetic seat, for implants with a diameter of 4.50 mm to 6.00 mm.

Composition: Made of Pure Grade 4 Titanium. Suitable for all clinical situations.

Practicality is the backbone of the Radhex Implants® System.

PHI350: Internal Hexagonal Platform Implants Ø 3.50. IS Connection Code.

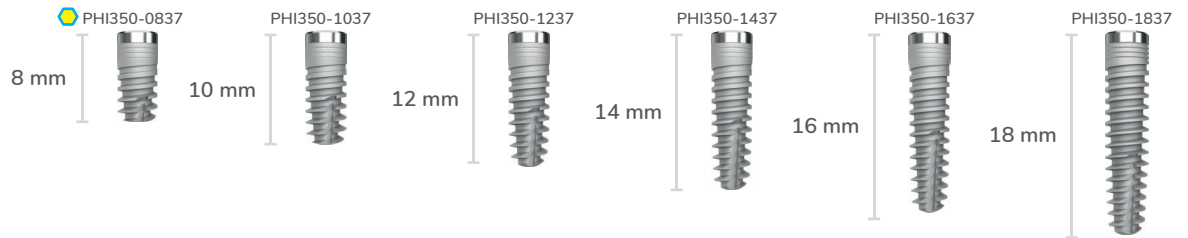
Available Diameters and Lengths

SCALE 1.5:1

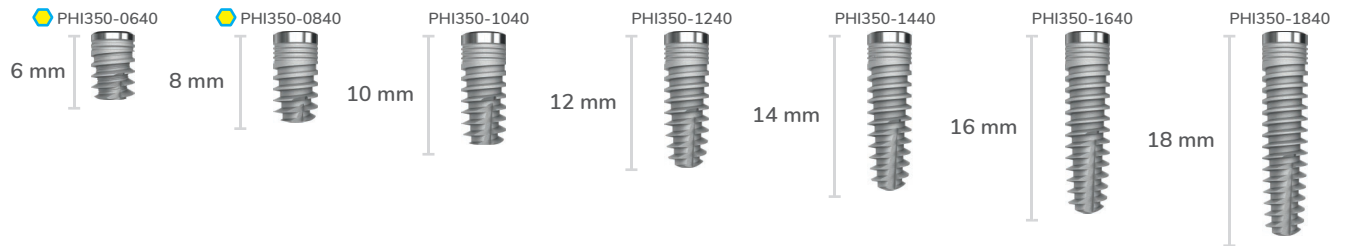
Ø 3.50



Ø 3.75

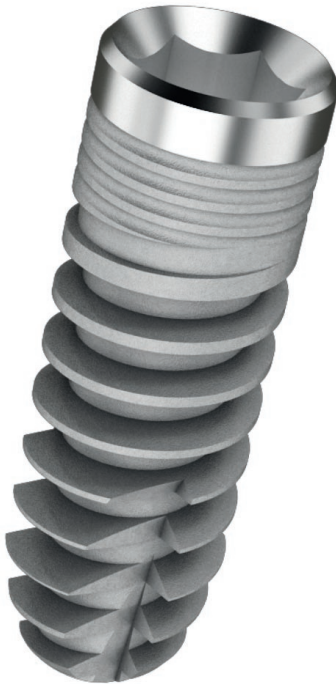


Ø 4.00



Short Implant

PHI 350 Type
RADHEX
IMPLANTS



PHI 450 Type
RADHEX
IMPLANTS



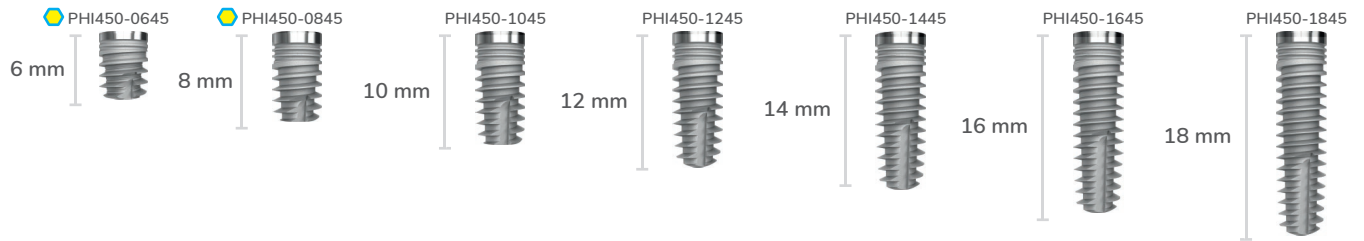
- PHI Internal Hexagonal Connection.
- Bone-link subtractive surface treatment.
- Cervical ring, with 1 mm machined surface finish.
- Platform switching availability.
- Helix threads, with progressive profile, conical central core and cylindrical bestiary profile.
- Straight design self-threading apical fronts.
- Generically indicated for all types of Bones.
- Especially indicated for high bone density, (especially for type I and type II).
- Milling speed: 500 to 800 rpm.
- Insertion speed: 50 rpm.
- Container with double protection vial.
- Maximum protection and easy handling.
- Includes closing cap.

PHI450: Internal Hexagonal Platform Implants Ø 4.50. IM Connection Code.

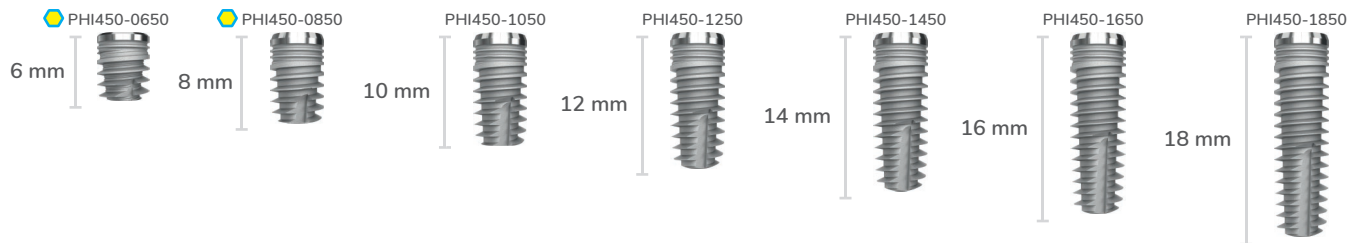
Available Diameters and Lengths

SCALE 1.5:1

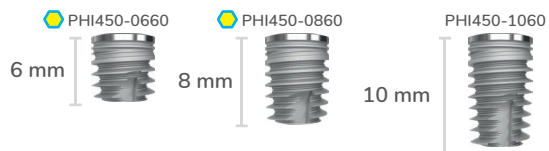
Ø 4.50



Ø 5.00



Ø 6.00



Short Implant



PHIA Lines

CONNECTIVITY:

IS = PHI350 = Plat. Hex. Internal Ø3.50 mm / Type Zimmer Tapered Screw Vent 3.5

IM = PHI450 = Plat. Hex. Internal Ø4.50 mm / Type Zimmer Tapered Screw Vent 4.5

At Radhex Implants® we think that an implant system should provide the professional with different alternatives. PHIA is an implant with a body designed for High Stability, even in low-density bone and always, with the platform, of the compatible PHI line.

Those who know implantology in depth, and have experience, understand the difficulties they can offer, the different topographical and structural situations of the jaws.

For this reason, they especially value a design that responds to extreme situations, where bone quality requires high stability designs.

This is the conceptual sense to which the PHIA line responds, an implant with a body designed for High Stability, even in low density bones and always, with the platform, from the PHI line compatible in its two diameter versions:

PHIA 350: Maximum restorative comfort, responding to a complete line of diameters and lengths, with a single platform, for implants with a diameter of 3.50 mm; 3.75mm; 4.00mm; 4.50mm and 5.00mm.

PHIA 450: High stability of prosthetic seat, for implants with a diameter of 4.50mm; 5.00mm and 6.00mm.

Composition: Made of Pure Grade 4 Titanium. Suitable for all situations, and especially indicated if there is low bone density, or irregular bone topography.

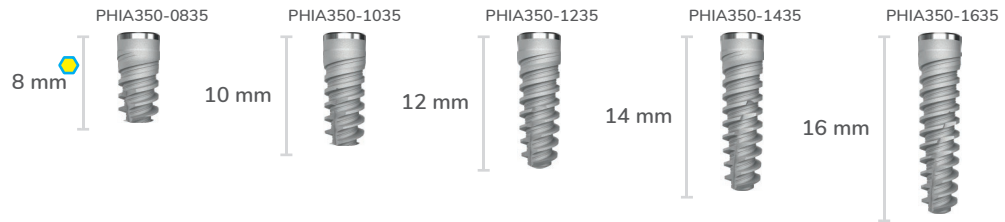
Practicality is the backbone of the Radhex Implants® System.

PHIA350: Active Internal Hexagonal Platform Implants Ø 3.50. IS Connection Code.

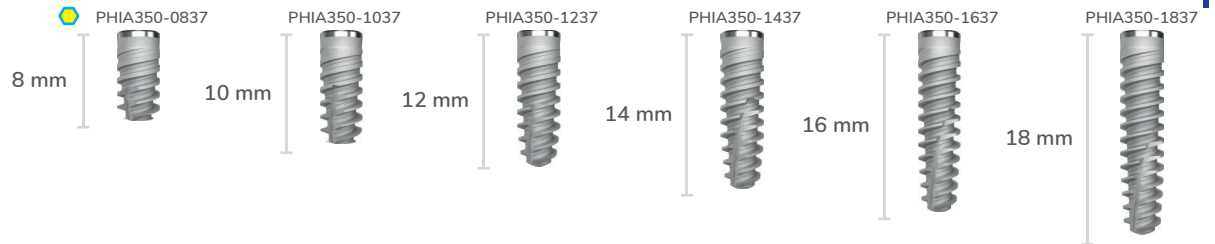
Available Diameters and Lengths

SCALE 1.5:1

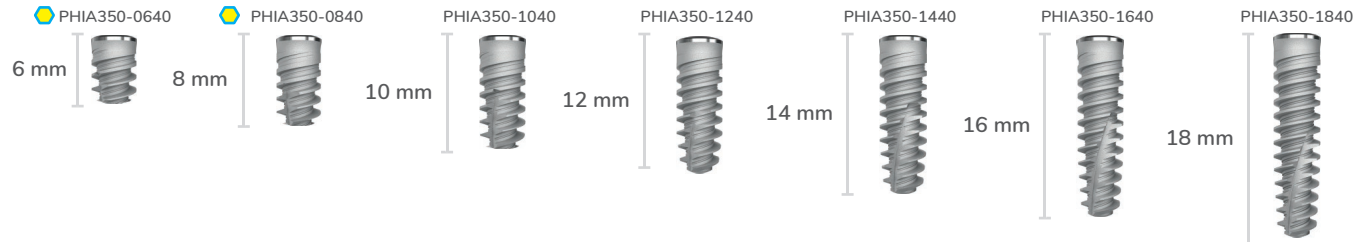
Ø 3.50



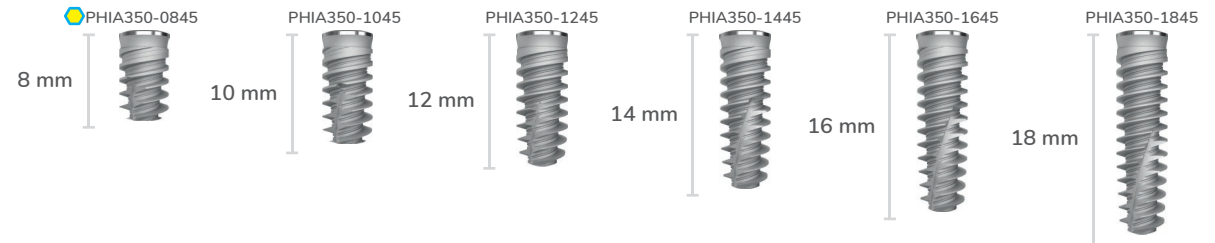
Ø 3.75



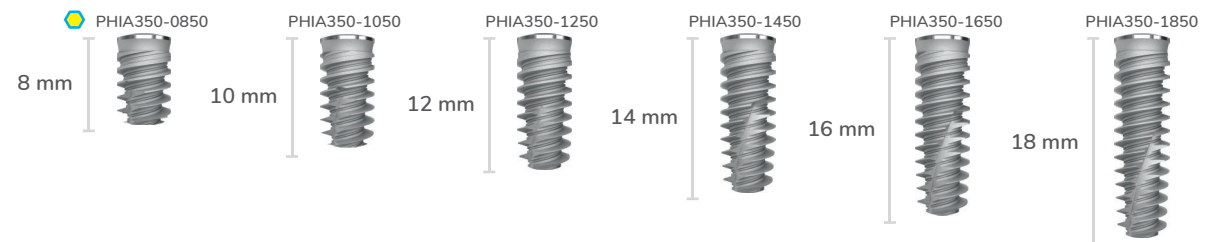
Ø 4.00



Ø 4.50



Ø 5.00



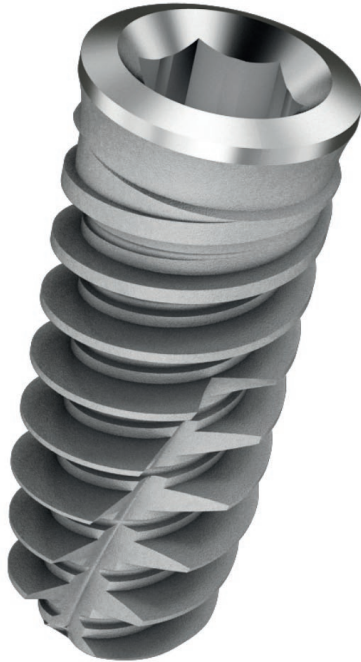
Short Implant

PHIA Implants

RADHEX[®]
IMPLANTS

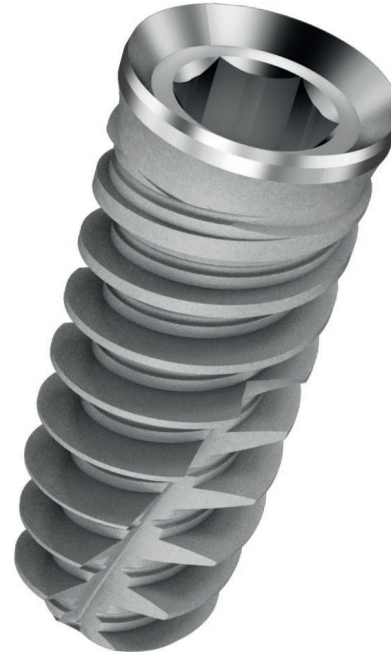
PHIA350 Type

RADHEX[®]
IMPLANTS



PHIA 450 Type

RADHEX[®]
IMPLANTS



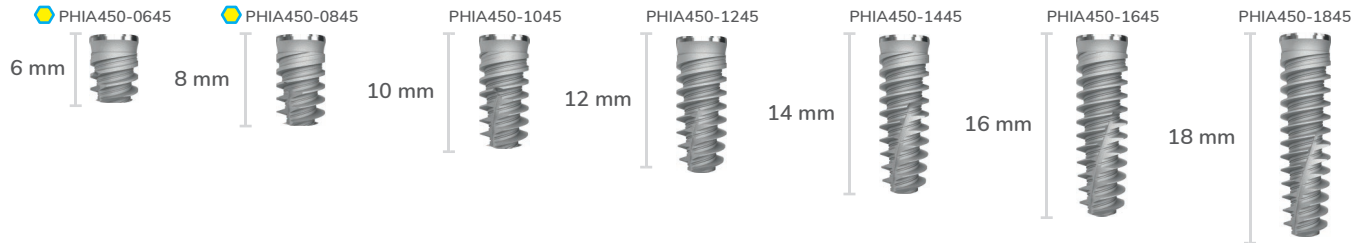
- PHI Internal Hexagonal Connection.
- Bone-link subtractive surface treatment.
- Cervical ring, with 0.5 mm machined surface finish.
- Platform switching availability.
- Double Helix threads, with progressive profile, conical central core and cylindrical bestiary profile.
- Self-threading apical fronts of helical design.
- Generically indicated for all types of Bones.
- Especially indicated where high primary stability is required (especially for type III and type IV).
- Milling speed: 500 to 800 rpm.
- Insertion speed: 25 rpm.
- Container with double protection vial.
- Maximum protection and easy handling.
- Includes closing cap.

PHIA450: Active Internal Hexagonal Platform Implants Ø 4.50. IM Connection Code.

Available Diameters and Lengths

SCALE 1.5:1

Ø 4.50



Ø5.00



Ø6.00



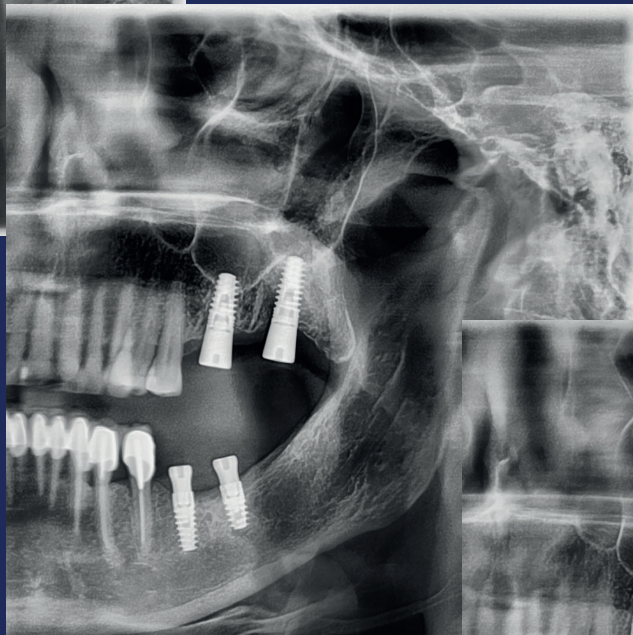
Short Implant

Immediate post-exodontia implantology, with PHI implants for Parts 26 and 27

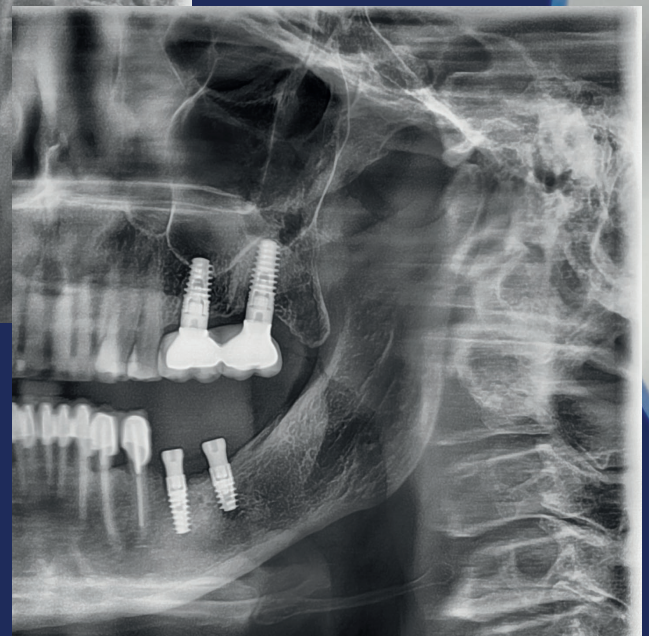
Clinical Case Description: Female Patient, 46 years old, without significant observations in general health, with injuries of caries and periodontal disease in 26 and 27. A solution is proposed: Partial rehabilitation Implant supported, with crowns metal ceramo, on 4 Radhex brand implants, PHI model. * Image courtesy of CDIH dental center.



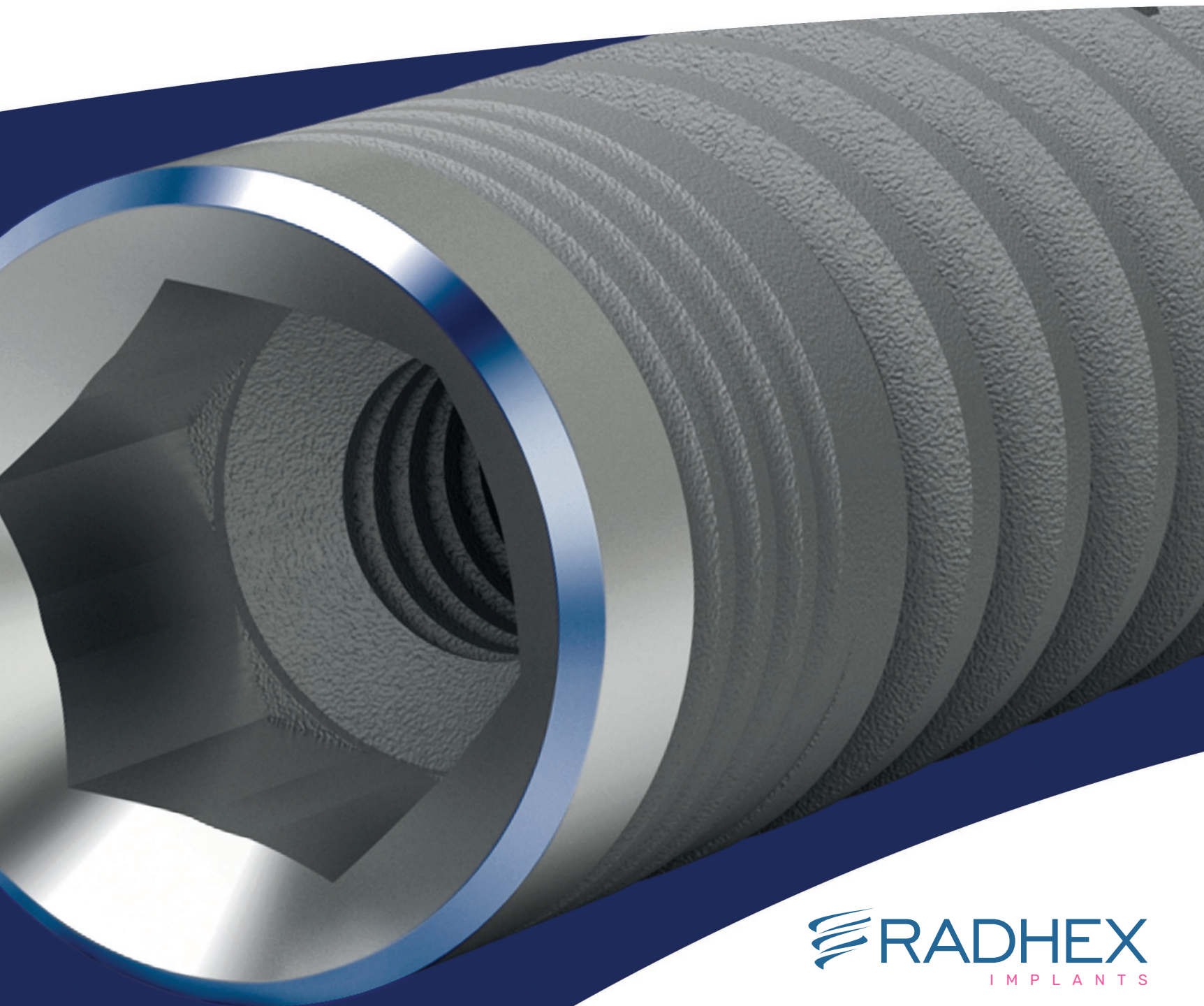
1- Prior to treatment



2- Implant Placement



3- Metal-ceramic restorations



 **RADHEX**
IMPLANTS

Quality
PHI



© RADHEX_IMPLANTS/RADHEX-IMPLANTS



comercial@radhex.es

900 350 450

www.radhex.es